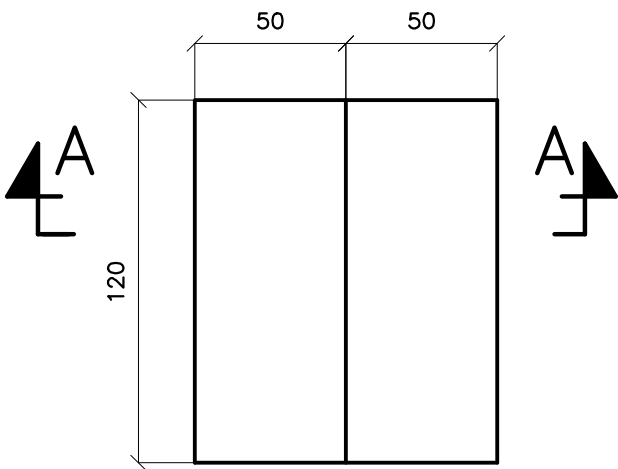


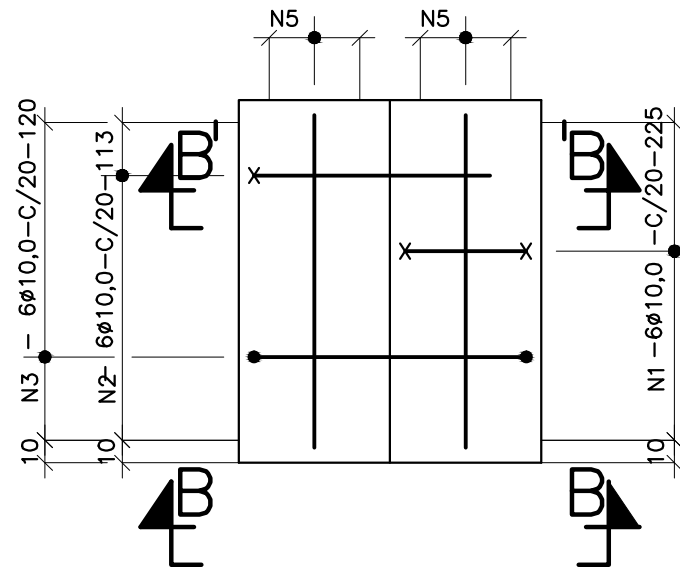
BLOCO-01
CURVA 90°

FORMAS

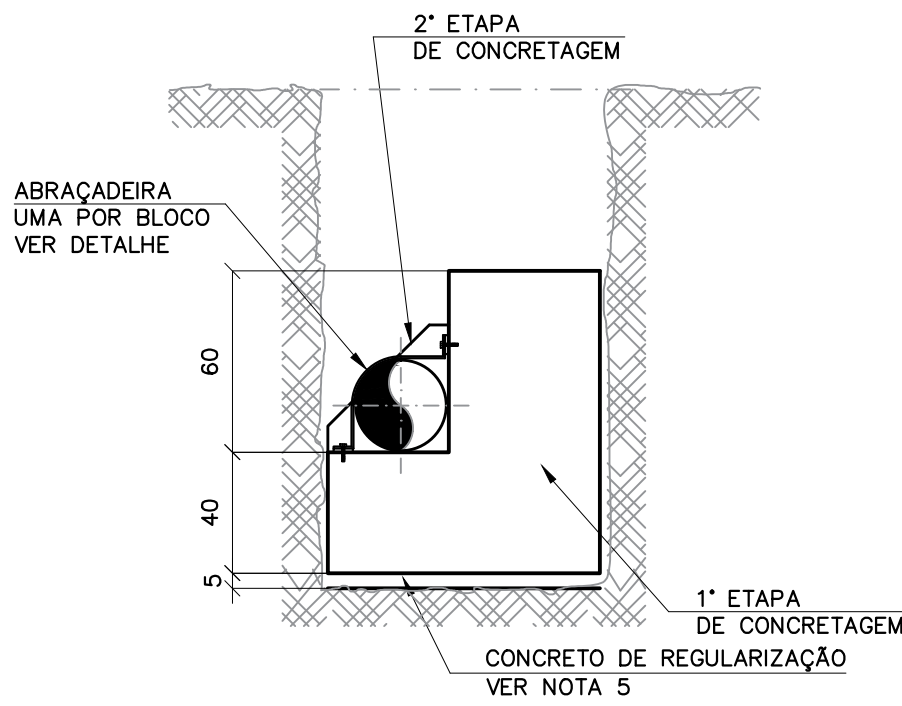


PLANTA
ESC. 1:25

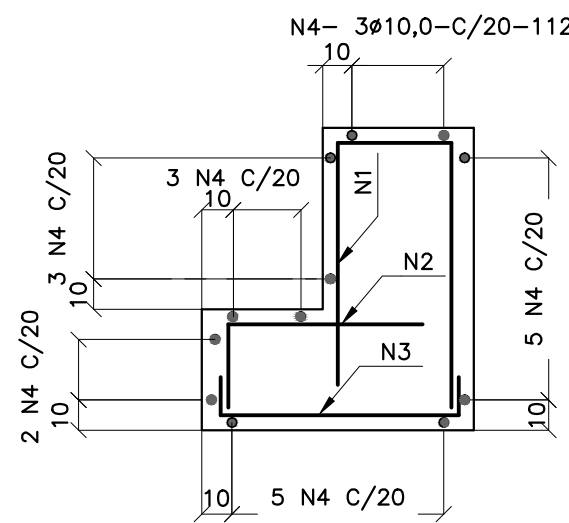
ARMAÇÕES



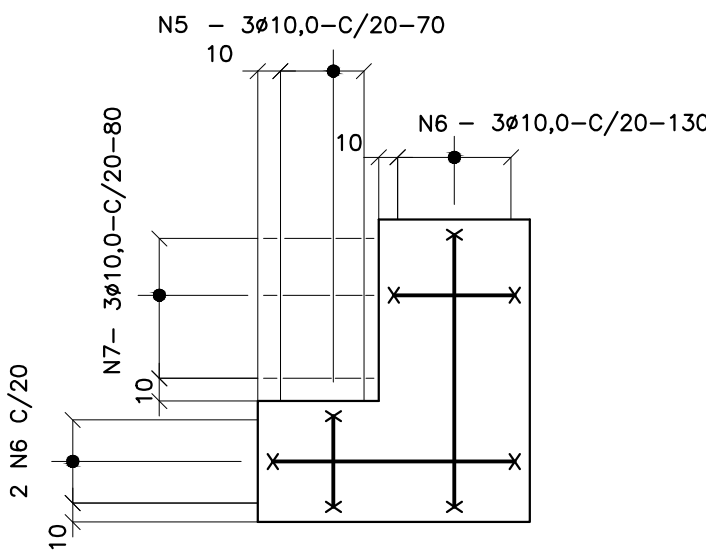
PLANTA
ESC. 1:25



CORTE A-A
ESC. 1:25



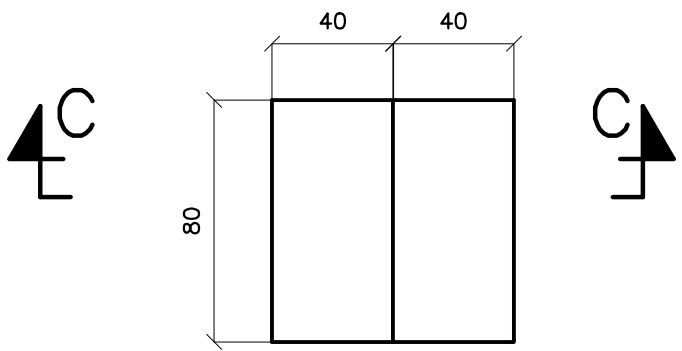
CORTE B'-B'
ESC. 1:25



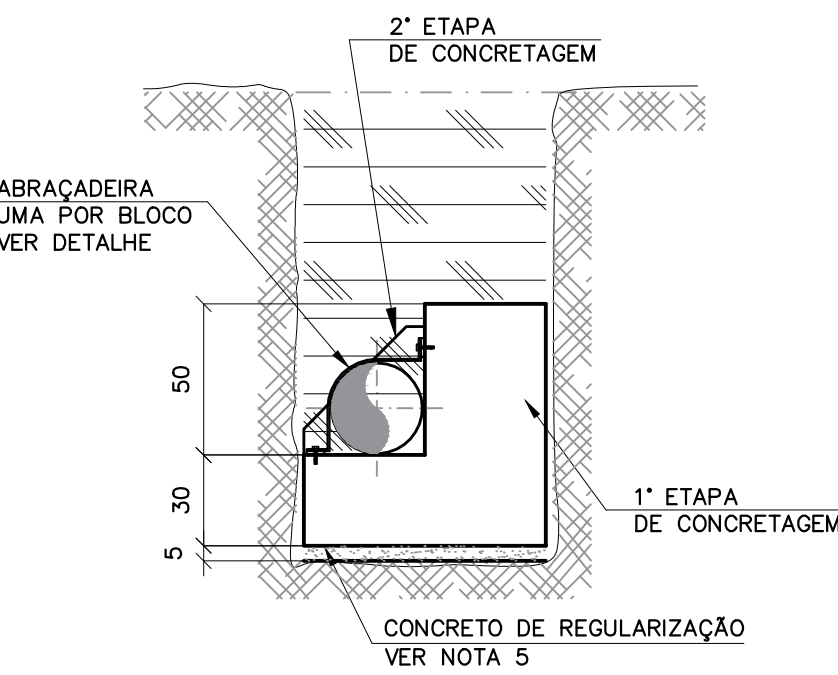
VISTA B-B
ESC. 1:25

BLOCO-02
CURVAS 11°, 22° E 45°

FORMAS

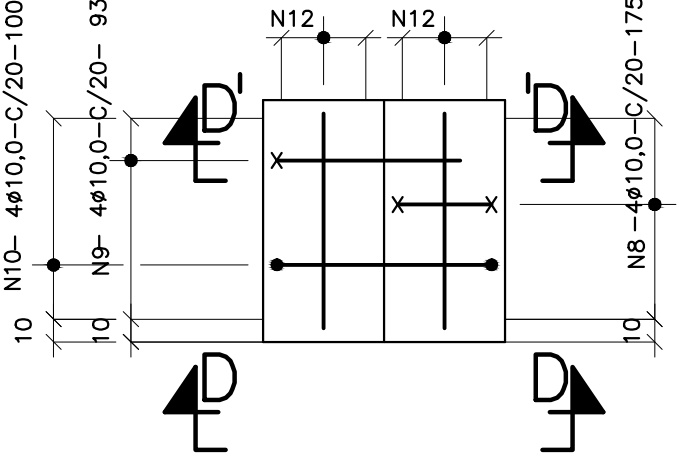


PLANTA
ESC. 1:25

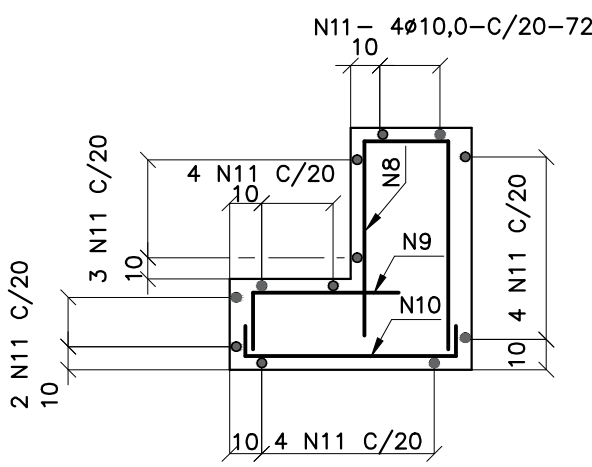


CORTE C-C
ESC. 1:25

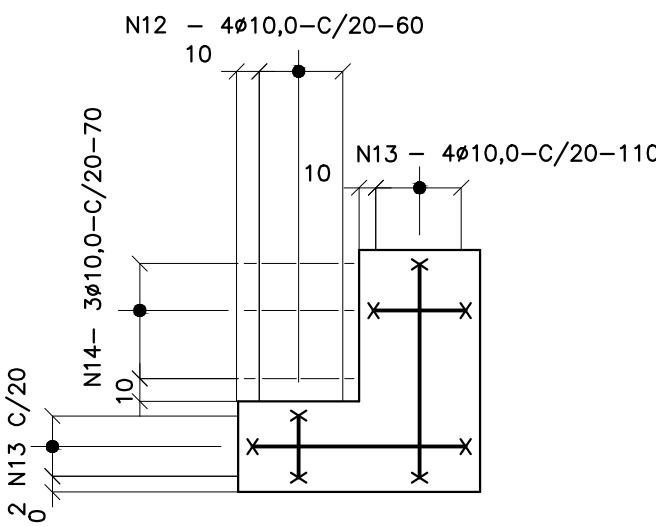
ARMAÇÕES



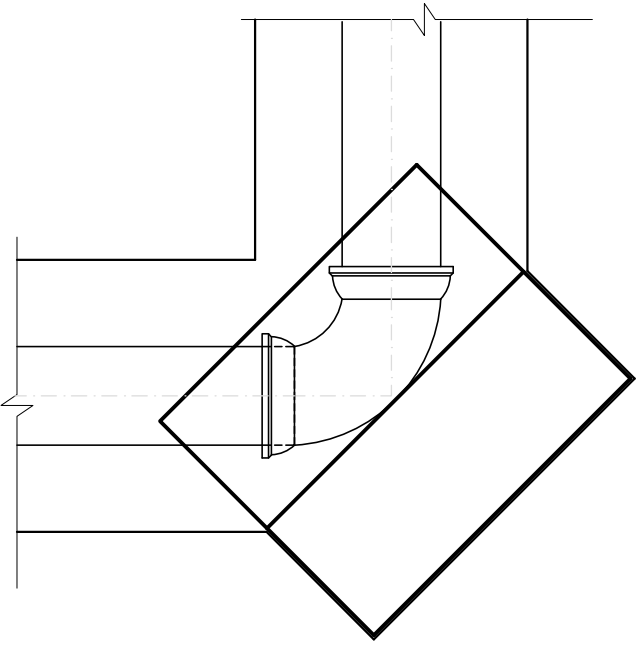
PLANTA
ESC. 1:25



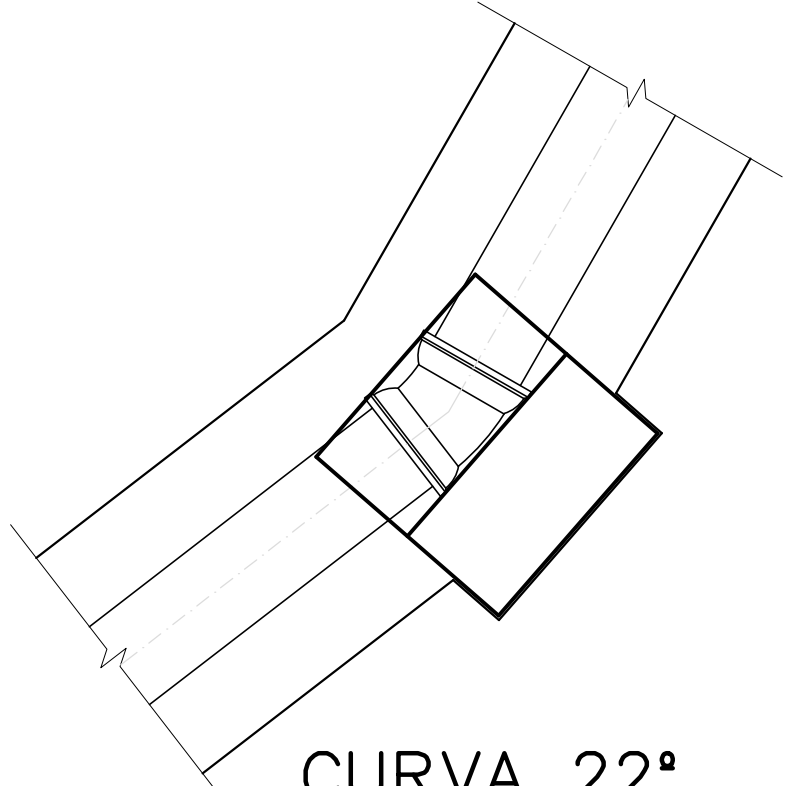
CORTE D'-D'
ESC. 1:25



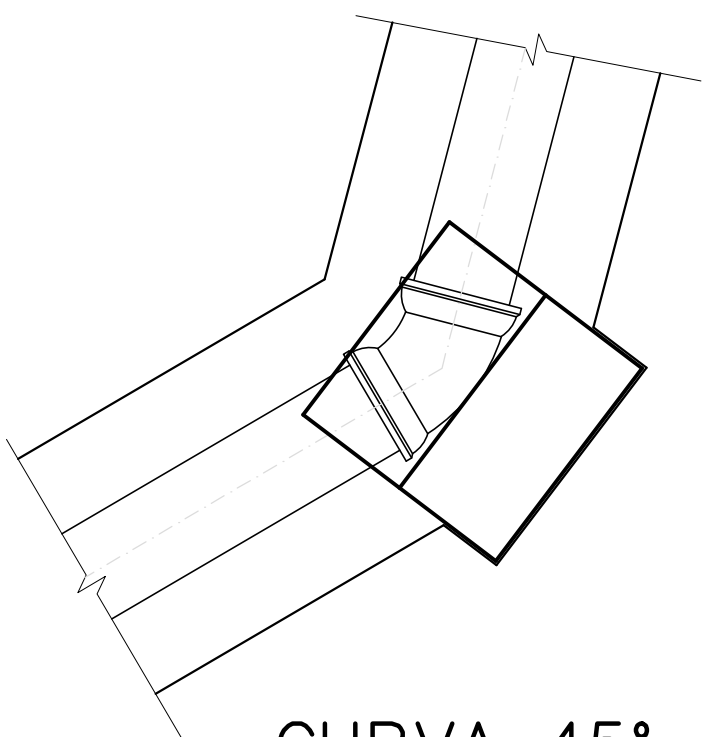
VISTA D-D
ESC. 1:25



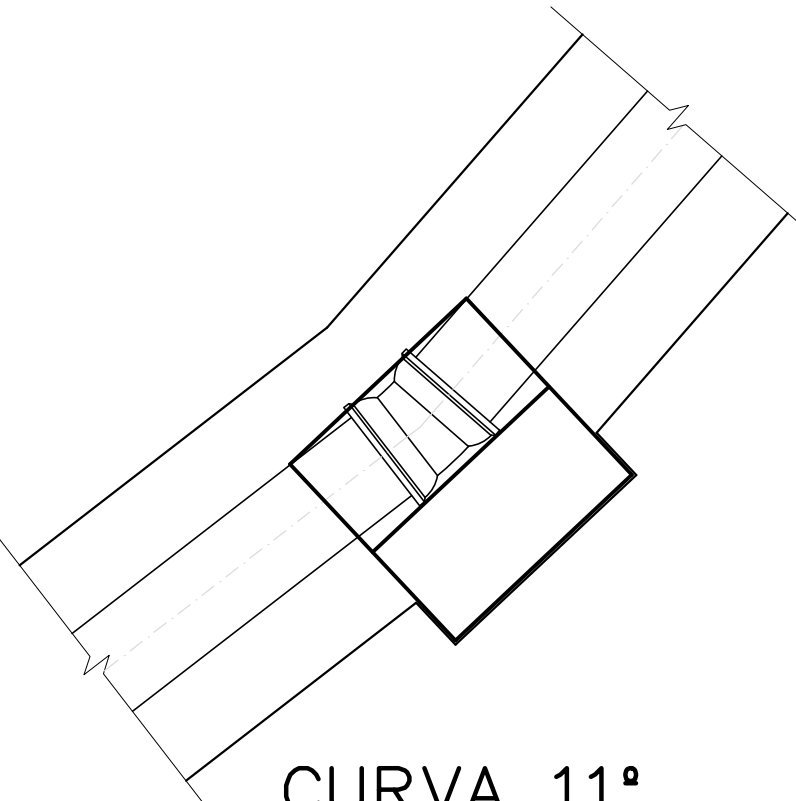
CURVA 90°
SITUAÇÃO
ESC. 1:25



CURVA 22°
SITUAÇÃO
ESC. 1:25



CURVA 45°
SITUAÇÃO
ESC. 1:25



CURVA 11°
SITUAÇÃO
ESC. 1:25

LISTA DE BARRAS				
POS.	BIT.	QUANT.	C.Uni. (cm)	C.Tot. (cm)
1	10.0	6	225	1.350
2	10.0	6	113	678
3	10.0	6	120	720
4	10.0	21	112	2.352
5	10.0	3	70	210
6	10.0	5	130	650
7	10.0	3	80	240
8	10.0	4	175	700
9	10.0	4	93	372
10	10.0	4	100	400
11	10.0	21	72	1.512
12	10.0	4	60	240
13	10.0	6	110	660
14	10.0	3	70	210
RESUMO DO AÇO				
PESO CA-50A Ø 10.0			102,94m	65,88 kg
PESO TOTAL CA-50A				65,88 kg

DOBRA DAS BARRAS	
POSIÇÃO	ORÇUIS
1	91
2	81
3	92
4	112
5	32
6	92
7	42
8	72
9	71
10	72
11	72
12	92
13	72
14	32

NOTAS:
1 - DIMENSÕES EXPRESSAS EM CENTÍMETROS, SALVO INDICAÇÃO CONTRÁRIA;
2 - RECOBRIMENTO DA ARMADURA, MÍNIMO DE 4,0cm;
3 - CONCRETO ESTRUTURAL Fck=30,0MPa;
4 - CONCRETO DE REGULARIZAÇÃO CONSUMO MÍNIMO DE CIMENTO 150,0Kg/m3;
5 - PREENCHER OS FUROS C/ SIKADUR 32, CONFORME ESPECIFICAÇÃO DO FABRICANTE.

OTTAWA
ENGENHARIA

Av. Pires, Torquedo Neves 3557 sl 306/Casimiro
Belo Horizonte - MG CEP: 31330-430
Telefone: (31) 3418-2172
ottawapeng@terra.com.br

ASS.:
R1
PROJ.:
DES.:
OLAVO NETO

APROV.:
HUDSON ROCHA

CREA: 49.318/D

DATA:
JANEIRO/2015

VISTO:

MATR.:
APROV.:
MATR.:
DATA:

CESAMA
água e vida

COMPANHIA DE SANEAMENTO MUNICIPAL
JUIZ DE FORA - MG

S.A.A. - PENIDO
BLOCOS DE ANCORAGEM
FORMA E ARMAÇÃO
PLANTAS, CORTES, DETALHES E RM.

ESCALA:	INDICADAS	A1
Nº		
FOLHA	02	DE 15
ARG.		